

IMAGE 6

As always the Atlas Image is defined by its elegant design and steadfast specification. The striking looks and contemporary feel all combine to make the Image a best seller.













ELEGANCE
AT ITS
BEST



Model illustrated 41 x 12' 6" - 2 bedroom. Duvets, pillows, bedrunner, TV, DVD player, and all other ornaments are for display only.



Standard Features

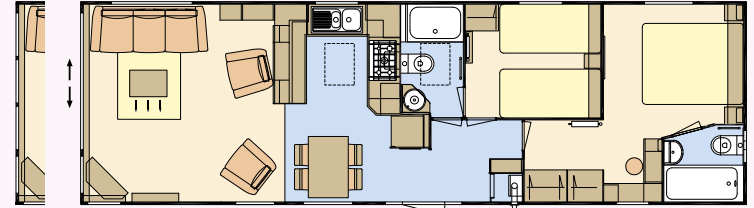
 Central Heating	 Double Glazing	 Extra Insulation	 Sliding Patio Doors	 Electric Fire	 Fridge/Freezer
 Hob	 Oven	 Integrated Microwave	 TV Point	 Sofa Bed	 Kitchen Velux®





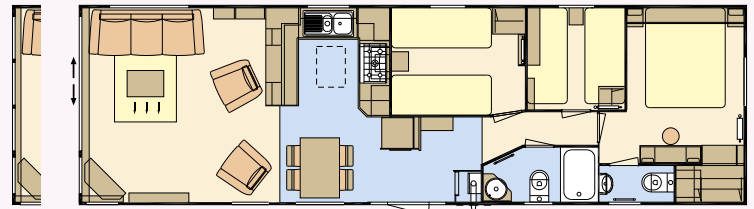
The bedroom areas are wonderfully inviting with plush headboards providing a relaxing and comfortable environment, giving this space a real feeling of luxury.





Front window option – sliding patio door standard

41 x 12-6 – 2 bedroom/6 berth



Front window option – sliding patio door standard

41 x 12-6 – 3 bedroom/8 berth

STANDARD FEATURE HIGHLIGHTS

- Central heating and towel radiator
- PVC double glazing
- Extra insulation
- Sockets with USB port
- Free standing suite with pull out bed and scatter cushions
- Free standing dining table and chairs
- Vertical blinds to front aspect
- Gas oven and grill with electric ignition and 5 burner hob with recirculating extractor hood
- Integrated fridge freezer
- Integrated microwave
- Velux® roof light
- Gas strut lift up bed to master bedroom
- TV points to master and twin room complete with signal booster
- En-suite bath/shower room to both bedrooms in 2 bedroom model
- En-suite WC to 3 bedroom model
- 3' single beds in 2 bedroom model only
- Front sliding patio doors including 2 downlighters
- Pre-galvanised chassis
- Coffee table
- Pull out bed to lounge
- Soft close hinges throughout kitchen
- Over bed reading lights
- Duvet covers/pillowcases for all bedrooms and runner and scatter cushions to master bedroom

POPULAR SELECTED OPTIONS

- Shower over bath complete with wet wall and concertina bath screen in 41 x 12-6 – 2 bedroom model
- Shower cubicle in lieu of bath
- TV point above fire in lounge
- Double glazed front windows in lieu of front doors
- One full size integrated appliance
- Fully galvanised chassis
- De-luxe bedding set (see pages 80–81)
- Environmental colours, rigid PVC, Canexel or timber cladding options

Please see our matrix at the back of the brochure for a comprehensive list of options.